

MANUAL CALL POINT

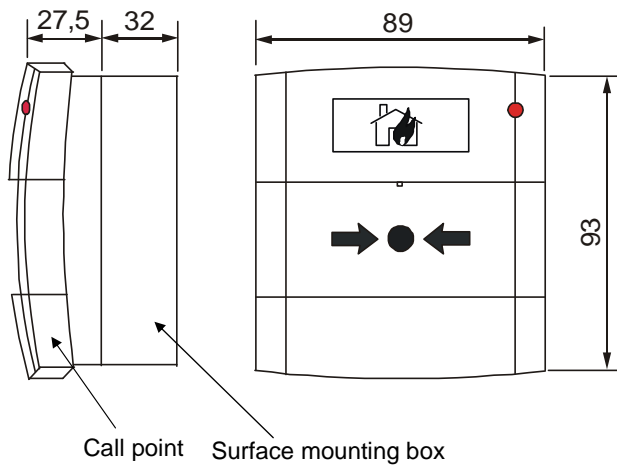
MCP5 Addressable Manual Call Point for FX NET Fire Detection System

MCP5 manual call points are used in the FX fire detection system. The MPS5 call point is compatible with the SLC loop interface board.

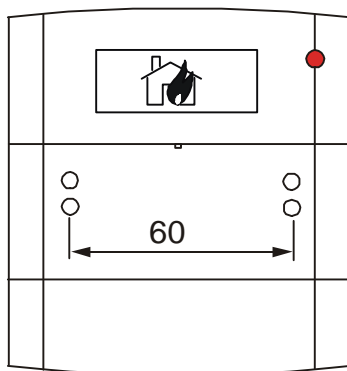
The MCP5 call point is designed for indoor use and it is fully approved to the latest EN54-11 standard.

Mechanical installation

The MCP5 call point can be installed as either a flush or surface mounted device.



100 mm free space must be left below the call point



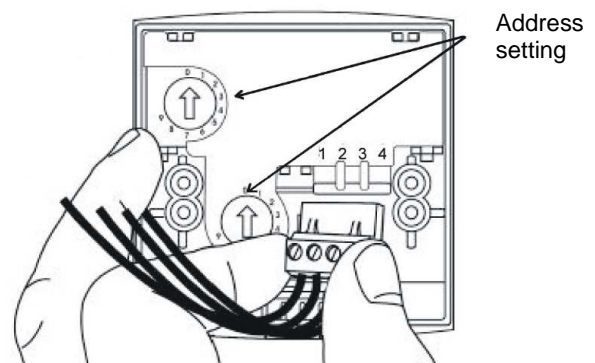
Distance between mounting holes is 60mm



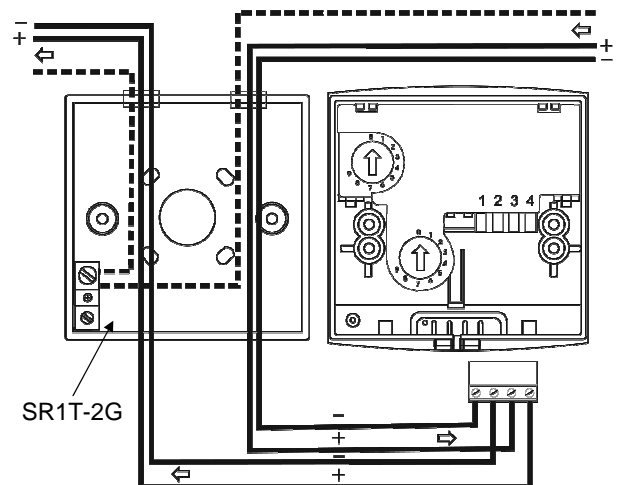
EN-version with its burning house symbol

Electrical installation

After wiring terminal connector, plug connector into appropriate position, see connection details (below).



Electrical Connections



Technical data

MANUAL CALL POINT

Dimensions	
- flush	93 x 89 x 27,5 mm
- surface	93 x 89 x 52 mm
Weight	100 g
Colour	Red, RAL 3001
Operating Temperature	-30°C ... +55°C
Humidity	0 ... 95%
Nominal Voltage	24 VDC
Standby Current	
- Non isolation version	300 µA
- Isolation version	400 µA
Alarm Current	5 mA
Connectors	Max 2,5mm ² cable
IP Rating	IP24D
Tested	EN54-11

SURFACE MOUNTING BOX SR1T-2G

Dimensions	87 x 87 x 32 mm
Weight	90 g
Colour	Red, RAL 3001
Terminals	1 pcs for continuation of the cable shield)
Mounting Holes	60 mm
Inlet in bottom	1 pcs Ø 20 mm
Inlet on lower side (to be pierced for cable)	2 pcs Ø 6 mm
IP Rating	IP 24D
Product code	06424310

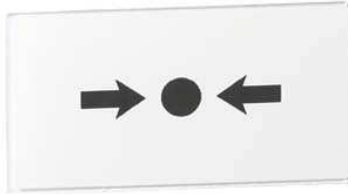
Can be used also the box SR3T2G

Technical data

Product codes		
MCP5A-RP01FG-01	06423730EN	Glass, no isolator, EN54 symbols
MCP5A-RP02FG-01	06423732EN	Glass, with isolator, EN54 symbols
MCP5A-RP01FF-01	06423740EN	Resetable unit, no isolator, EN54 symbols
MCP5A-RP02FF-01	06423742EN	Resetable unit, with isolator, EN54 symbols

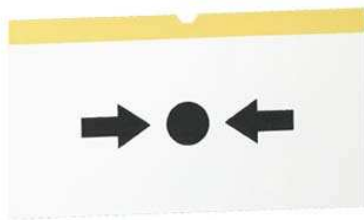
Call point accessories

REPLACEMENT GLASS ELEMENT – KG1



Material	Plastic covered glass
Resetting function	Glass must be replaced
Product code	06424900EN
Glass elements in package	10 pcs

REPLACEMENT FLEXIBLE ELEMENT – PS210



Material	Plastic
Resetting function	Test & Re-set facility
Product code	06424920
Elements in package	10 pcs

MANUAL CALL POINT COVER – PS200

Transparent hinged cover for call point.



Cover dimensions	90 x 104 mm
Weight	35 g
Product code	06424502

SPARE TEST KEYS – SC070

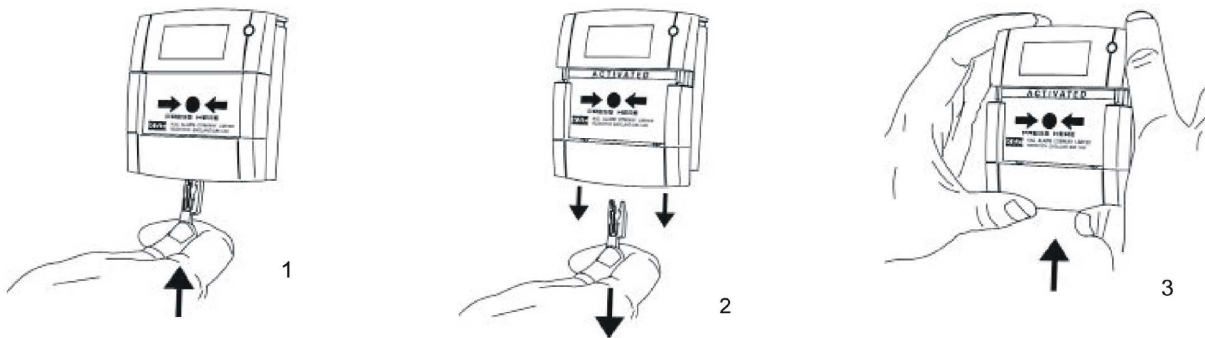


For testing and resetting MCP5 and M500KAC manual call points	
Product code	06424510
Test keys in package	10 pcs

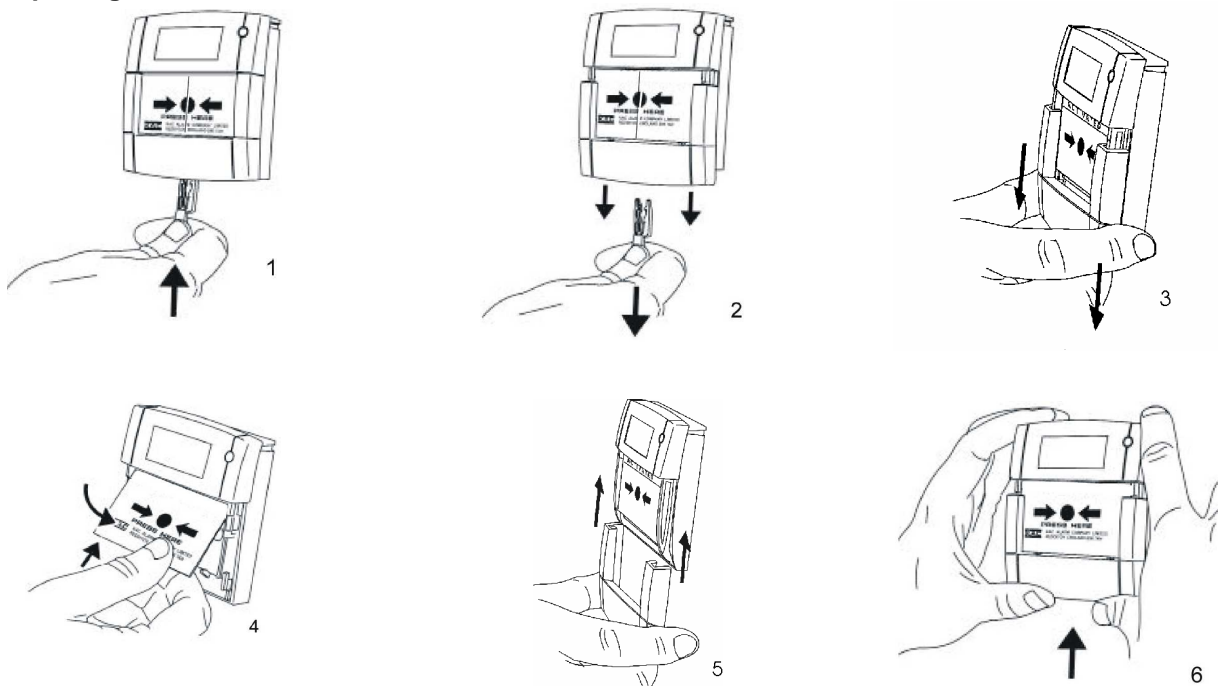
Pelco reserves the right to modifications.

Test, element replacement and reset of the call point

To test



To replace glass



To reset/resettable element

